

MENNONITE HERITAGE CENTRE Gallery

CANVASS

Volume XVIII, No. 4, SEPTEMBER OCTOBER 2015

<http://gallery.mennonitechurch.ca/>

hours: Mon. – Fri., 8:30 AM – 4:30 PM; Sat., noon – 5 PM

an institution of Mennonite Church Canada

located on the campus of Canadian Mennonite University

TAX DEDUCTIBLE DONATIONS: The MHC Gallery's budget is met primarily through private, tax deductible donations. Please, help keep the gallery alive and growing. Make cheques payable to: MHC Gallery. Mail to: MHC Gallery, 600 Shaftesbury Blvd., Winnipeg, MB R3P 0M4. Credit card donations, contact Connie Wiebe at cwiebe@mennonitechurch.ca. (204) 888 6781; Online at <https://gallery.mennonitechurch.ca/donate>
Ray Dirks, curator, rdirks@mennonitechurch.ca

Tandem: Going Places Together

Terry Hildebrand & Miriam Rudolph

September 11 – October 27, 2015

OPENING, Friday, September 11, 7:30PM

In this two-person show by Terry Hildebrand and Miriam Rudolph, Terry will show functional ceramics on wooden structures, which invite the user to consider the conscious action of drinking and using a vessel. Miriam will exhibit a selection of thematically diverse suites of prints that reflect on life and the engagement with our surroundings.

Terry grew up in southern Manitoba. Miriam grew up in Paraguay. She moved to Winnipeg to pursue university studies. Terry and Miriam met at the University of Manitoba and eventually married to become partners in art and life. They are both graduates of the U of M School of Fine Arts. A few years ago they moved to Minneapolis where Terry received his Masters in Fine Art in ceramics in 2014 from the University of Minnesota.



Miriam Rudolph, Winter Sleep, 2014

Canvas — a piece of strong cloth on which to paint a picture



Terry Hildebrand, Bottle with Cups, 2014

Then, it was Miriam's turn. A move to Edmonton followed. Miriam is currently pursuing her MFA in printmaking at the University of Alberta.

This artistic couple retain close connections to Manitoba and feel it is home. The exhibition at the MHC Gallery will give Manitobans an opportunity to catch up on both their careers. Come celebrate with them their homecoming and side by side exhibitions. The opening is on Friday, September 11 at 7:30PM. Both artists will be in attendance.

Terry and Miriam will, also, be the featured speakers at the MHC Gallery's annual fundraiser on Friday, October 2.

More information on Terry can be found at http://pottery.com/Terry/Terry_Hildebrand.html
Miriam's website is at <http://www.miriamrudolph.com/>

examine carefully, discuss — **Canvass**

Together

2016 Annual MHC Gallery Fundraiser

Friday, October 2, 7:30PM

Speakers: Miriam Rudolph & Terry Hildebrand

Music: JD Edwards

Gallery update from Ray Dirks

Delectable desserts

Door Prizes

RSVP to Connie Wiebe at cwiebe@mennonitechurch.ca or 204 888 6781, extension 194

RSVP by September 14

The annual fundraiser is always a fast paced, entertaining and informative evening. It is, also, central to the ongoing work of the gallery. The gallery's budget is supported almost entirely, from hanging supplies to salaries, through the donations of its supporters. The gallery's mix of programming inside and outside its walls, in Winnipeg and far beyond, in schools, in the Mennonite community and with other cultural and faith communities, is unique. Come and enjoy the evening and help the gallery to keep moving forward, together.



Lynda Toews, storytelling at opening



Leap in Faith project.
Manju Lodha with Gordon Bell student



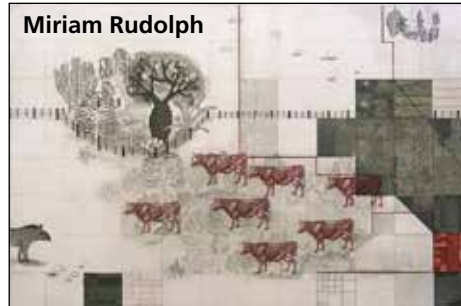
Along the Road to Freedom painting



Along the Road to Freedom at global assembly of Mennonite World Conference in Pennsylvania



Terry Hildebrand



Miriam Rudolph

NEXT: Sunday, Nov 1 - Sunday, Nov 14. *Besa: A Code of Honour*, Muslim Albanians who rescued Jews during the Holocaust (American Jewish photographer). A special showing of the *Besa: A Code of Honour* documentary will take place on November 3. Look for details in the next CANVASS.

November 20, 2015 - January 23, 2016: Sad Sort of Clean. An exhibit of Hydro related photos in Northern Manitoba taken by Matt Sawatzky and Portraits of the North by Gerald Kuehl. Curated by Will Braun.

Proposals?

Artists, please, submit your proposals to us! The gallery hosts exhibits in approximate two month blocks throughout the year.

Mailing list

To receive **CANVASS**, invitations to all exhibitions and other gallery updates contact Connie Wiebe, cwiebe@mennonitechurch.ca.

Contact

Ray Dirks, MHC Gallery, 600 Shaftesbury Blvd., Winnipeg, MB Canada R3P 0M4. Ph: (204) 888-6781. E-mail: rdirks@mennonitechurch.ca

Thanks

To all who make donations, large and small, we thank you for helping keep the gallery alive and relevant.

Canvass

Please, consider a donation

I'd like to support the MHC Gallery (PLEASE PRINT)

name _____

address _____

_____ postal code _____

phone number (____) _____ amount _____

Make your cheque payable to the MHC Gallery

Mail to: MHC Gallery, 600 Shaftesbury Blvd., Winnipeg, MB R3P 0M4

Contact Connie Wiebe at (204) 888 6781 or cwiebe@mennonitechurch.ca to donate by credit card. Online at <https://gallery.mennonitechurch.ca/donate>

DONATIONS ARE TAX DEDUCTIBLE