

Mother Earth and Her Lovers: Repair and Maintenance

Bob Haverluck, Rhian Brynjolson, Sam Beardman
 with poets Dennis Cooley, Lori Matties, Gerry Wolfram

January 24 - March 14

Opening: Jan 24, 7:30pm

Bob Haverluck, is a well-known artist and storyteller who delights in and defends the watery, animally earth. His most recent work is *When God was Flesh and Wild: Stories in Defense of the Earth*, which includes 55 drawings. He writes: "If you believe the earth can be mended, you believe too much. If you think it can't, you believe too little." These words once accompanied the image to the right. Perhaps the words reflect the uncertainty of our time and point to the task of believing wisely in good possibilities.

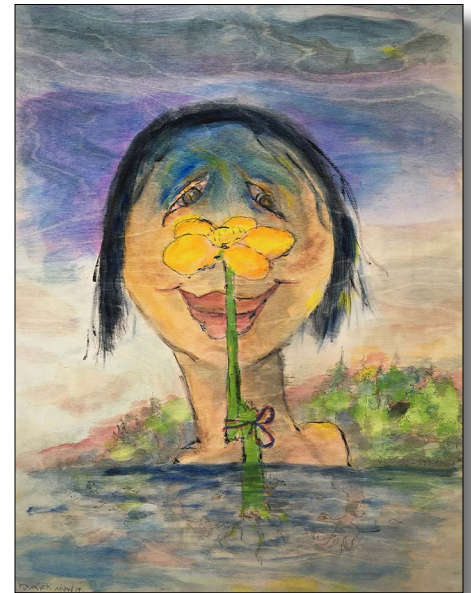
Underlying this exhibit are the artists' shared belief that Mother Earth as we have known her is much endangered and in need of mending and defending. How best to speak about these things is an elephantine question. Perhaps we, like the ancient poet Job, can only speak "wild words" because "reasonable words" are owned and operated by the powers who deny that anything is out of order.

If wild words or images fill the gallery, do they not reflect the artists' essential task – to offer a wild sense, a kind of

non-sense to the near insane "reasonableness"? Artists may offer a puzzling wisdom that sabotages the ruling cleverness, cunning and stupidities.

The scraps and pairings offered here are poems, photographs, paintings and drawings. They are cut from fear or amorphous dread, from desperate hope, from trust surpassing belief, from love and sadness; from delight on tip-toe joy and thanksgiving. Always they are a kind of play that invites us to play as well.

The little gods of Bigger and More would have us believe the situation is fixed, locked and loaded. This art would say otherwise: together we can find the motion and the moves, the play in the impossible possibilities the creaturely earth yet offers.

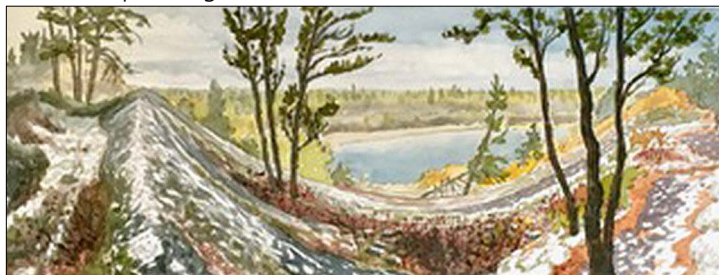


Bob Haverluck, 2019

Against the demise of the world
 she gathered scraps and pairings
Gerry Wolfram, de/composing

say you saw creation/lying beaten and bruised by the side of the road./maybe the neighbourly
 thing/would be to sit down beside her and weep.
Lori Matties, say

Rhian Brynjolson is a visual artist, author, and art educator who works out of her studio at Falcon Lake. She writes: Author Annie Dillard wrote that when she was a child, she hid pennies along the sidewalk for strangers to find. She could hardly contain her excitement at the idea of people noticing these unexpected gifts. Now, when she walks in the woods or



Rhian Brynjolson, Centennial Trail

by a pond, she keeps her eyes open, hoping for pennies; those glimpses of some unexpected gift.

Everything in the wild world is connected. A rare hummingbird moth hovers in the wildflowers. A sinewy marten hunts for voles. A quartz vein shines against pink granite and the green-black of thousand-year-old lichen. Friends pick cups of blueberries, with blue fingers and bluer tongues.

The value of wild places is beyond measure. Yet our wild places are dwindling and species are disappearing. Because I love the diversity of wild places, I've donated to The Nature Conservancy, and tried to drive my car less. But we need to do this together. To protest and write letters to governments and businesses. And to think about what we're willing to give up so that our great-grandchildren will have a future. These pennies are worth seeking and savouring – and protecting.

Falcon Creek Studios, January 2020

TAX DEDUCTIBLE DONATIONS: The MHC Gallery relies almost entirely on donations from gallery supporters who undergird operating and project budgets — from office and exhibit supplies to salaries and everything between. To help keep the gallery growing, see the ways to donate at the bottom of the following page.

there are blue jays mourning doves budgies
strange creatures whose yips and gibbers
you can never exorcise or contain *Dennis Cooley, george*

Winnipeg-based musician and photographer **Sam Beardman** is well known for his socially conscious style. He writes:

On a bitterly cold day in January 2017, I fell through the ice on the Red River near Winnipeg. That terrifying experience was the beginning of a two-year journey. I returned as often as possible to the forests, lake shores and riversides to find myself both in front of and behind the camera. Early in the project, I tried to find natural forms that aligned with my own human form, so that my body became a part of the landscape and the landscape became a part of me. I tried to lose myself in the waters, on the ice, among the trees and on the shorelines.

Eventually the urgent stress of that event gave way to something else – a new awareness of the lakeland and its beauty. For me this project became more than resolving a conflict left over from a traumatic event. Healing myself involved falling in love again with a fragile and beautiful world.



Sam Beardman, self portrait, 2018

Events connected with *Mother Earth and her Lovers*

Workshop: Saturday, Feb. 8, 2020 at CMU, MHC Gallery 9am to 3:30pm

OUR PEACE TREATY WITH THE EARTH: Building Prayers, Blessings & Woes, Litanies, Stories and Songs. This Inter-faith event invites us to join in working in small groups and individually at crafting worshipful words and shapes for the vision and practice of being Peace Treaty peoples. **Cost:** \$20 for the day, including lunch and snacks. **To register,** contact Selenna Wolfe at 204 487-3300, Ext 344 or swolfe@cmu.ca

Resource people include Stan McKay, Len Udow, Zoe Matties, Michael Wilson, Jamie Oliviero, Karen Clavelle, Bob Haverluck

Sunday afternoon coffee houses at the gallery, 2 to 4:30pm:

FEB. 9. SONGS, HYMNS AND STORIES IN DEFENCE OF CREATION

Drawing on the wisdom of many faith traditions, this will be an afternoon of performing stories, songs and lots of singing along.

MARCH 1. POEMS, STORIES & SONGS

MARCH 9. BUILDING AN ECOLOGICAL ACTIVIST BOOK OF SONGS, STORIES & POEMS

NEXT Breaking the Silence on Domestic Violence 2, opening Fri. March 20, 7:30pm.

"Manitoba consistently recorded the highest rate of intimate partner violence in Canada, nearly double the Canadian rate according to Statistics Canada in 2015."

Breaking the Silence on Domestic Violence was a one-day exhibition at the WAG in 2018. The success of that event has led to a second exhibition to run during a full exhibition cycle at the MHC Gallery. For more information, go to <https://www.cmu.ca/gallery/exhibits.php?s=breakingthesilence>

Call for Submissions Breaking the Silence on Domestic Violence 2

DEADLINE: Feb. 25, 2020. Submit up to a maximum of two artworks for consideration. INQUIRIES: Isabel at isabelcheer@gmail.com

Thank you to all who attended exhibitions and events in 2019 and thanks to all who supported the gallery financially in 2019. The gallery continues, now in its 22nd year, as an institution that exists almost entirely on private donations. We are grateful. To those who back the unique programming and role of the gallery, we request your continuing support.

Exhibitions

The gallery generally hosts six exhibition time slots per year — either one exhibition using both levels or, most often, different exhibitions on each level. Contact Ray Dirks at rdirks@cmu.ca for exhibition information.

Mailing list

To receive information on all upcoming exhibitions join our mailing list by contacting Selenna Wolfe at swolfe@cmu.ca or 204 487-3300, ext 344.

Thank you

To all who make donations, large and small, we thank you for helping this unique gallery continue to thrive and make a difference.

DONATIONS

The **MHC**Gallery is a program of Canadian Mennonite University. It is 100% funded, from hammers and nails to salaries, by donations. Your support is what keeps the gallery alive.

donation options:

- by cheques payable to Canadian Mennonite University, **MHC**Gallery on the memo line, mailed to 500 Shaftesbury Blvd., Winnipeg, MB R3P 2N2
- online at cmu.ca/donate (by credit or debit card) See drop down tab to designate the gallery.
- make a monthly commitment using the online portal or by contacting Selenna Wolfe at swolfe@cmu.ca or 204 487-3300, ext. 344
- bring a donation when you visit the gallery in person