

# CANVASs

Volume XXVII, No. 2, March - April, 2024

Located on the south campus of Canadian Mennonite University @ 610 Shaftesbury Blvd., Winnipeg, Manitoba

a free bi-monthly newsletter of  
**MHCGALLERY**

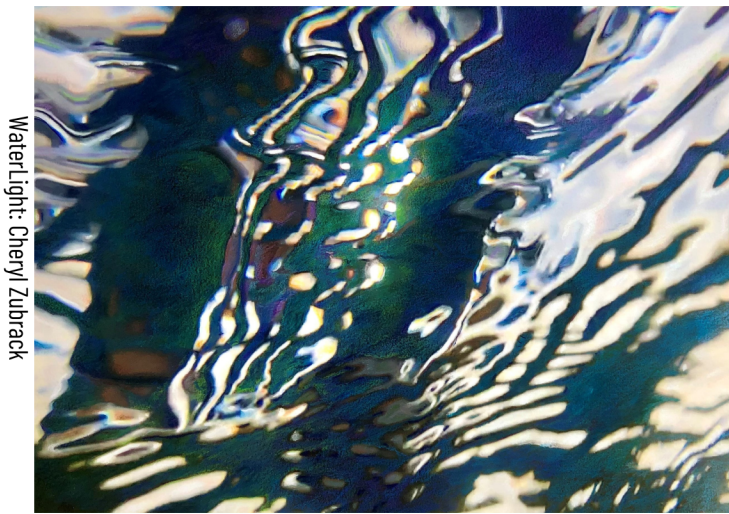
A Gallery of Canadian Mennonite University

M-F 8:30 - 4:30 | Sat. 12 - 5

# TWO new exhibitions

March 1 - April 13

opening night Artist Talk March 1, 7:30pm



WaterLight: Cheryl Zubrack

## Between WaterLight

by Cheryl Zubrack

Using photography, paint, and weaving, Cheryl Zubrack creates an embodiment of experiences with water to explore the mystery of the between-ness of water and air.

**Celebrate World Water Day:** March 22, 12-1 @ MHC Gallery

"Watersource/Lifeforce": a World Water Day dialogue presented by MHC Gallery and CMU

## Brushstrokes & Bluewords

Featuring the ekphrastic poetry of  
Christine Stewart-Nuñez & the art of Pauline Aitken

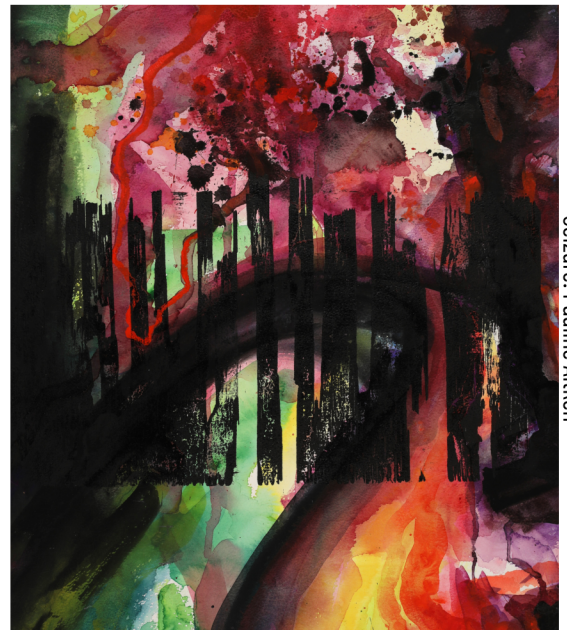
It was midnight all morning.  
Seizures were spiking  
and they were going to spike.  
The blueword lodged  
in the back of his throat.

*from "Thirteen Ways of Understanding Blueword"*

**Celebrate International Poetry Day:**

Free events & readings, March 21, 12 - 1:30 @ MHC Gallery

**Join us for a free workshop:** Writing from Art and Creating from Poems: April 6, 2-4 @ MHC Gallery



Seizure: Pauline Aitken

## We need your help in 2024

As we celebrate our 25th Anniversary Season, we're inspired to consider our continued growth. Offering special programming for International Poetry Day (March 21) and World Water Day (March 22) are just a few of the new and exciting ways we plan to continue to learn and grow together through art. To support sustainable growth, we're excited to share our new sponsorship opportunities!

### Would you help launch our new sponsorship program?

Did you know that the vast majority of consumers (84%) want to see companies support charitable initiatives, with many (73% of North Americans) caring enough to take it into consideration when they make a purchase?

(source: Mintel's *Cause Marketing US 2018* and *Attitudes Toward Corporate Social Responsibility US 2018*)

Please share our sponsorship opportunities with a business you frequent! If you know of a business interested in sponsorship, we would be delighted to discuss how our *Installation, Event, or Print & Promotion Packages*; our *Sculptor Package* (Exhibition Sponsorship) or our *Masterpiece Package* (season sponsor) can help the business meet their community goals. Contact [mhcgallery@cmu.ca](mailto:mhcgallery@cmu.ca) or 204-487-3300 ext. 346 for more information.

Coming up...

## Into the Night: Lullabies and Morning Songs River On The Run Artist Collective & Guests April 19 - June 1, 2024

### Support the Gallery



MHC Gallery is a program of Canadian Mennonite University primarily funded through donations. Please consider donating by cheque (include MHC Gallery on the memo line), online at [cmu.ca/donate](http://cmu.ca/donate) (designate the gallery via the drop down menu) or in-person when you visit the Gallery. Monthly donations support long-term planning at the Gallery!

**Thank you! Your donations, large and small, help this unique gallery thrive!**

### We Are Moving Online

Please send us your current email address if you would like to go paperless. Join our email list by contacting [mhcgallery@cmu.ca](mailto:mhcgallery@cmu.ca) or 204 487-3300 ext. 344

### MHC Gallery Connect

Visit: 610 Shaftsbury Blvd | Mail: 500 Shaftsbury Blvd., Winnipeg, MB R3P 2N2  /mhcgallerymanitoba  
Phone: 204.487.3300 ext. 346 | Email: [MHC Gallery@cmu.ca](mailto:MHC Gallery@cmu.ca) [cmu.ca/gallery](http://cmu.ca/gallery)  @mhcgallery